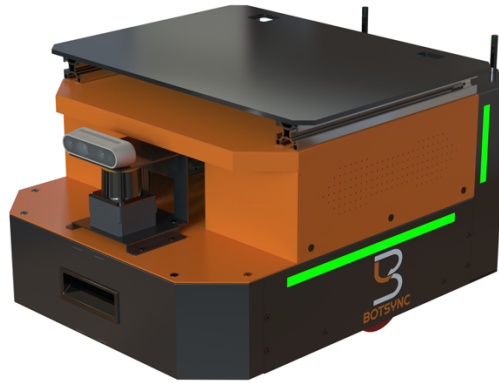


VOLTA

A compact and powerful indoor mobile robot platform designed for educational learning, industrial research and solution prototype.



Size and Dimensions

Dimension	520 x 365 x 233 mm
Weight	22 kg
Ground Clearance	16 mm
Maximum Payload	30 kg

Navigation

Maximum Speed	1.0 m/s
Drive Type	Differential
Wheels	Outer Diameter: 85 mm Width: 20 mm
Minimum Turning Radius	0 degree

Battery and Power System

Battery Chemistry	Lithium Iron Phosphate Battery (LiFePO4)
Battery Capacity	24V, 12Ah
Charging Options	Direct Plug-in, Swappable Battery
Runtime - Standby	10 hours
Runtime – Nominal Usage	5 hours
Full Charge Time	2.5 hours
User Power	5V, 12V fused at 5A each
Battery Life Cycles	3000 cycles



Contact us for further information on customized setup of sensors and pricing.
Email: contact@botsync.co
Website: www.botsync.co

© 2021 Botsync Pte Ltd. All rights reserved.

Interfacing and Communication

Control Mode	Kinematic Velocity
Feedback	Battery voltage, wheel odometry, control system output and system diagnostics
Encoders	Incremental
Drivers and APIs	ROS

Environment

Operating Temperature	10 to 35 °C
Storage Temperature	10 to 50 °C
Environment	Indoor Use Only
Climb Grade	Flat surfaces only



Contact us for further information on customized setup of sensors and pricing.
Email: contact@botsync.co
Website: www.botsync.co

© 2021 Botsync Pte Ltd. All rights reserved.